



Cairns QLD Australia

November 2018

Nautilus SCUBA Club Newsletter

Dive Trips
Club Meetings
Guest Speakers
Trip Reports



Editor: Phil Woodhead

Cover photo: Phil Woodhead

Local dive trips and get together information

NOVEMBER						
M	T	W	T	F	S	S
			1	2	3	4
5	6	7	8	9	10	11
12	13	14	15	16	17	18
19	20	21	22	23	24	25
26	27	28	29	30		

Club meeting

Junior Eisteddfod Association at 67
Greenslopes Street, Edge Hill.
Starting with a BBQ at 7pm

For upcoming dive trip information keep an eye on your emails or visit the Nautilus website



December Club Dive will be aboard TUSA T6 departing Cairns on Saturday 8th (this is the club Christmas Dive).

The Club Afterparty is at the Backyard, located at the Shangri-La Cairns, starting at 5-5:30



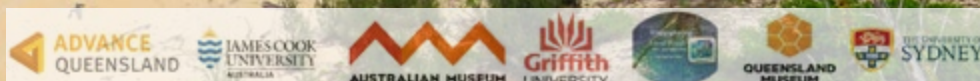
Keep an eye on the website for information about the Lake Eacham get together in January 2019

This months guest speaker will be Samantha Aird

Use of Great Barrier Reef Marine Resources Over the Last 10, 000 Years

Samantha Aird, PhD Candidate, James Cook University
e: samantha.aird@my.jcu.edu.au

Despite what we know about the biological diversity of the Great Barrier Reef, little is known about how humans interacted with marine species before modern and historical occupation periods. In this presentation, we'll discuss what research has uncovered from archaeological midden records from Great Barrier Reef Islands. I'll talk about my current PhD project on the Keppel Bay Islands and what molluscs can tell us about human occupation and ancient climate patterns. Importantly, insights on the use of marine resources and climate patterns are useful for modern Great Barrier Reef fisheries management and conservation efforts.



Special dives will be organised in addition to the regular monthly day trips, these could be with Reel Cray-Zee, Rumrunner, and could be day trips or weekend trips to the reef or the Yongala. Better watch your emails for future announcements.

WANTED: Pre- 1985 photos - images - data of the Reef - for a University of Queensland Project

Please look in your attic, photo box, ask your family, grand parents, uncles - for photos of the GBR - reef - pre 1985 - they can be an important contribution for analysing the the quality of the reef over last 100 years.

The University of Queensland has recently started a project to compare historical reef images with recent ones and to try to see what happened to our much beloved barrier reef over time.

This project aims to utilise underwater photographs taken in the early pioneering days of SCUBA to extend the baseline understanding of reef condition over time.

The ultimate goal is to inform politicians, so that well considered decisions can be implemented to protect this world wonder from a downward spiral, as we are are “on a slippery slope to slime” (from corals to algae and bacterial mats).

Betty Young, a retired Environmental Scientist who used to live and dive in Cairns in the 70s, contacted me about the project. She has a vast knowledge of the reef and reef related matters. A very interesting lady!

She asked whether we could help to contact divers, ex-divers, children of divers, who might still have negatives or images of the Great Barrier Reef of before 1985 -

The project sounds very interesting as they will not only compare historic images but use them in a whole set of historical data about the reef, a.o. like wheather data, cyclones, core samples of reef structures, water quality, pests [she told me that the COTS were [already] a big problem in 1970s but at that time there was no political interest in this problem].

Call for Historical images - before 1985

Therefore, it would be great if you can look in your archives and see if you have historical reef images (pre-1985). This is the start. And perhaps in the near future, the project would call upon you to revisited those sites to take current images.

The images have to have identifying data on them like :

Year- and date [if possible] of photo taken

Reef name

Location

Depth

Landscape photo - bigger area - no macro

Description of dive

camera

NB: The images [slides, photos, negatives - will be saved securely by the project and only used for study purposes. Copyrights will be respected.

Call for Historical data re water quality, land use etc

They are also very keen to receive any water-quality data, images of land use change or any other information you have, that is relevant to changing coral reef conditions within the last 30-40 years.

Project group University of Queensland

Dr. Sander Scheffers is a Senior Lecturer at Southern Cross University (NSW), specialising in Climate Change, Coral Reef Ecology and Coastal Geomorphology.

Dr. Tara Clark is specialised in historical reef change, amongst a whole range of other subjects.

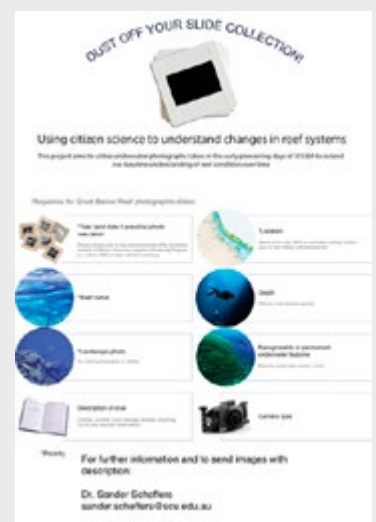
Dr. Betty Young is a retired environmental scientist of the UQ and

Please send any related matters to the projects team leaders email address and all contributions will be properly acknowledged and acted on!

Dr. Sander Scheffers - sander.scheffers@scu.edu.au

President

For more questions call me: 0407753328



Club Trip to CLUB OSCELLARIS *Anilao, Philippines*

Sat 17th – Sat 25th May 2019

7 nights/4 dives per day package, Total = 24 dives

Flying with Air Niugini

(overnight flight on 24th May 2019)

Total package from approx. \$2500

Deposit of \$400 to the Club account will secure your spot.

For more info or to sign up, contact Akiko at

overseastrips@nautilus-scuba.net



UP COMING TRIP

Walindi, PNG Club Trip

15 – 22 September 2019

(7 nights/15 boat dives) – flying with Air Niugini

Max 16 pax (7+1, 14+2 FOC discounts)



Deposit of \$400 to the Club account will confirm your spot on the trip.

To sign up or for more info, contact Akiko, Overseas Trip Coordinator via email:

overseastrips@nautilus-scuba.net.

(Photo credits: Colin Tonazzi: barracuda photo: Terry Cummins)

Tufi, PNG: 19 -26th October 2018

by Chris Remington

This was Tony and mine first overseas dive trip with the Club and a wonderful “welcome back” experience on renewing our membership after an absence of a few years. Tufi is approximately 250kms north east of Port Moresby, a short flight over the Owen Stanley Range. There is no town, just a resort surrounded by numerous villages. Deep fjords (drowned river valleys – not glacier fjords) cut deeply into the mainland from the edge of the Solomon Sea. The airfield is an open field with a dirt runway, located next to one village. A short walk away is the very comfortable resort, build on the location of the original government office. During WW2 the spot was a base for PT boats, until accidentally blown up while refueling by the allies. The resort’s manager hopes to one day include old wrecks in the deeper parts of the fjord as dive sites. The views down the fjord are stunning, and a canoe of the area is recommended for the scenery and sighting of hornbills. The downside is a steep walk up and down the hill to the dive shop – however a trusty resort land cruiser could always be called for the weary.

Our first 2 days were shared with a large contingent of weekenders from Port Moresby, so our group of 6 had separate use of a banana boat – covered, fast, stable but just a little uncomfortable in the swell and chop. This was Tony and mine first overseas dive trip with the Club and a wonderful “welcome back” experience. Once the weekenders returned to work, we were moved to the larger (approx 32ft) aluminum boat. It was slower but did have a toilet!

Unlike other areas of PNG, there are no outlying islands – the 37 dive sites (of which we did 13) are primarily individual coral reefs in the Solomon Sea, or fringing reefs in the fjords. Visibility 20 – 30 metres. Each site was easy diving, with no strong currents at this time, but an abundance and diversity of marine life, healthy corals and sponges. Though strong winds prevented access to the outer reefs on 2 days, the inner reefs were just as good, and no site was a disappointment. I expect the sighting of a white hammerhead was the highlight for many.

Two other dive sites were different: the WW2 B25 Mitchell Bomber was in approximately 14m, after landing offshore from a village when fuel ran out. The wreck is still in good condition, but the nearby river mouth and silty bottom meant visibility quickly deteriorated from 5 to 1m. The ‘jump-in’ dive at Tufi wharf is basically a conglomeration of rubbish and old constructions but the diversity of life warranted 2 night dives by the 4 intrepid members, and 2



Image by Chris and Tony



Image by Chris and Tony



Image by Chris and Tony



Image by Chris and Tony

Tufi, PNG: 19 -26th October 2018

by Chris Remington

day dives by Tony and I. For Tony 3 ghost pipe fish were the highlight here (one with brooding pouch), but for me, the juvenile Pinnate Batfish. Chris, Annette, Paul and Jim just saw so much that was awesome their first night dive was over 90 minutes and dinner had to wait!

Our PNG dive team were friendly, competent, considerate and very strong. Surprisingly the water temperature at 28°C was a bit too cool at times (freezing on some dives for me). Varying land based tours are available at the resort if you want a break from diving, and snorkelers could easily manage the shallows of a number of sites. We were continually amazed by the distances travelled by the local villagers in their dugout outrigger canoes, and a small market outside the resort provides for souvenirs. Our return necessitated an overnight stay in Port Moresby, where unfortunately the wide divide between the rich government/businesses and impoverished local people increasingly is more evident. The coming occurrence of APEC was very evident.

A big thank you to Akiko for arranging a great trip, which I would recommend and be glad to revisit.

Chris Remington



Image by Chris and Tony



Image by Chris and Tony



Images by Chris Serpell and Annette Mckail



Images by Chris Serpell and Annette Mckail



Tufi, PNG: 19 -26th October 2018

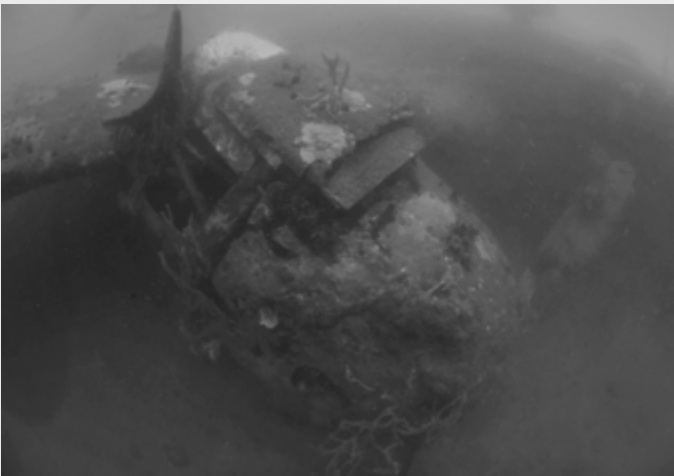
by Chris Remington



Images by Chris Serpell and Annette Mckail



Images by Chris Serpell and Annette Mckail

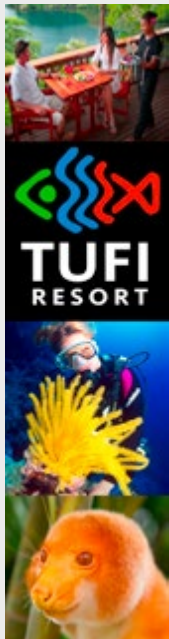


Images by Chris Serpell and Annette Mckail



Images by Chris Serpell and Annette Mckail

Supporting the Nautilus Scuba Club



MV CHERTAN Milne Bay



PARTING SHOT

